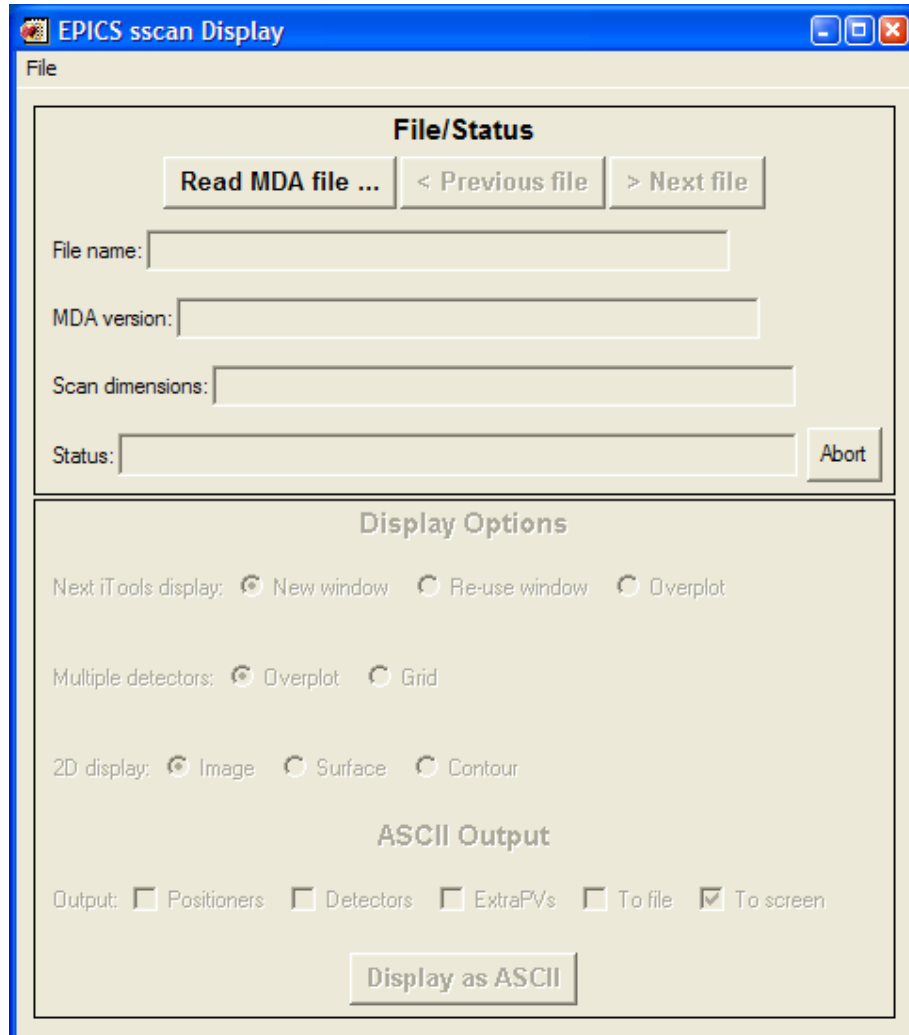


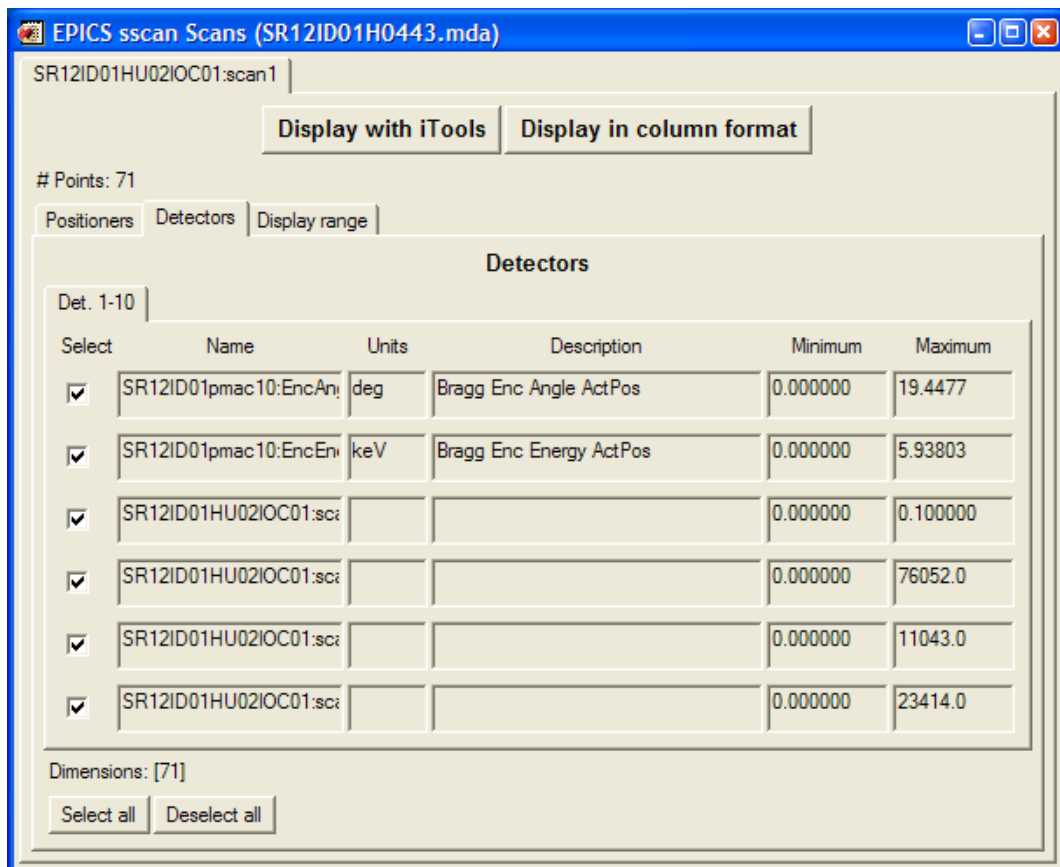
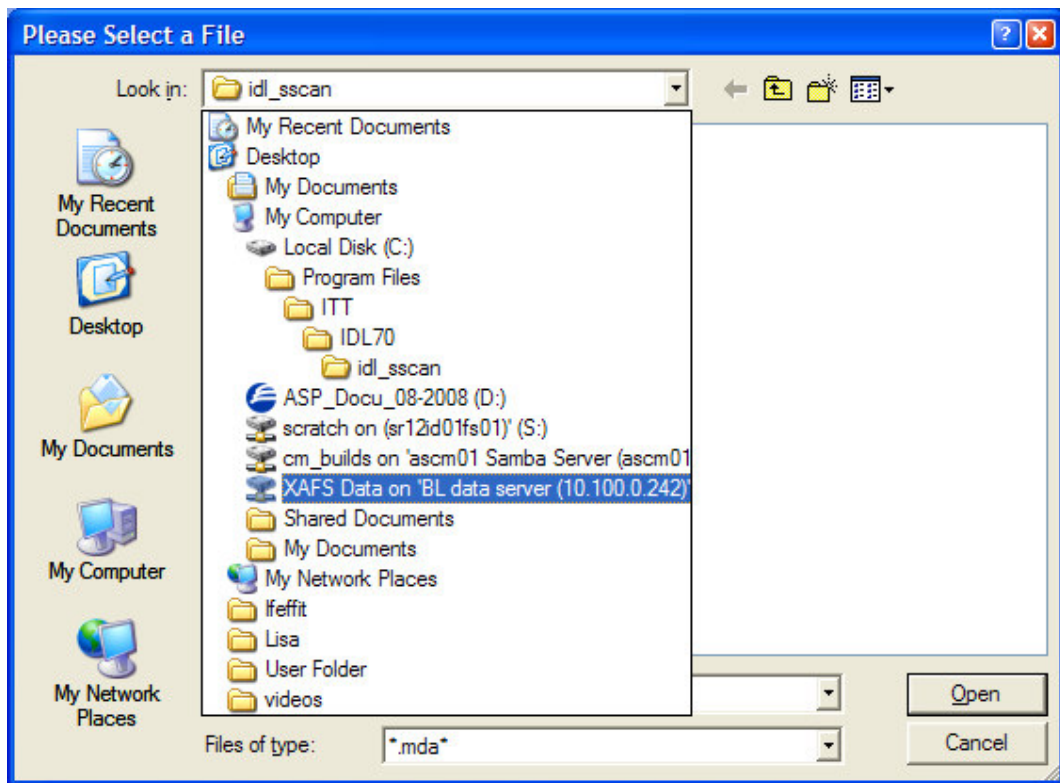
Transfer your data

Data are collected in a MDA format. Therefore before transferring your data you need to convert them into a txt file. To do that use the MDA Display program on PC3.

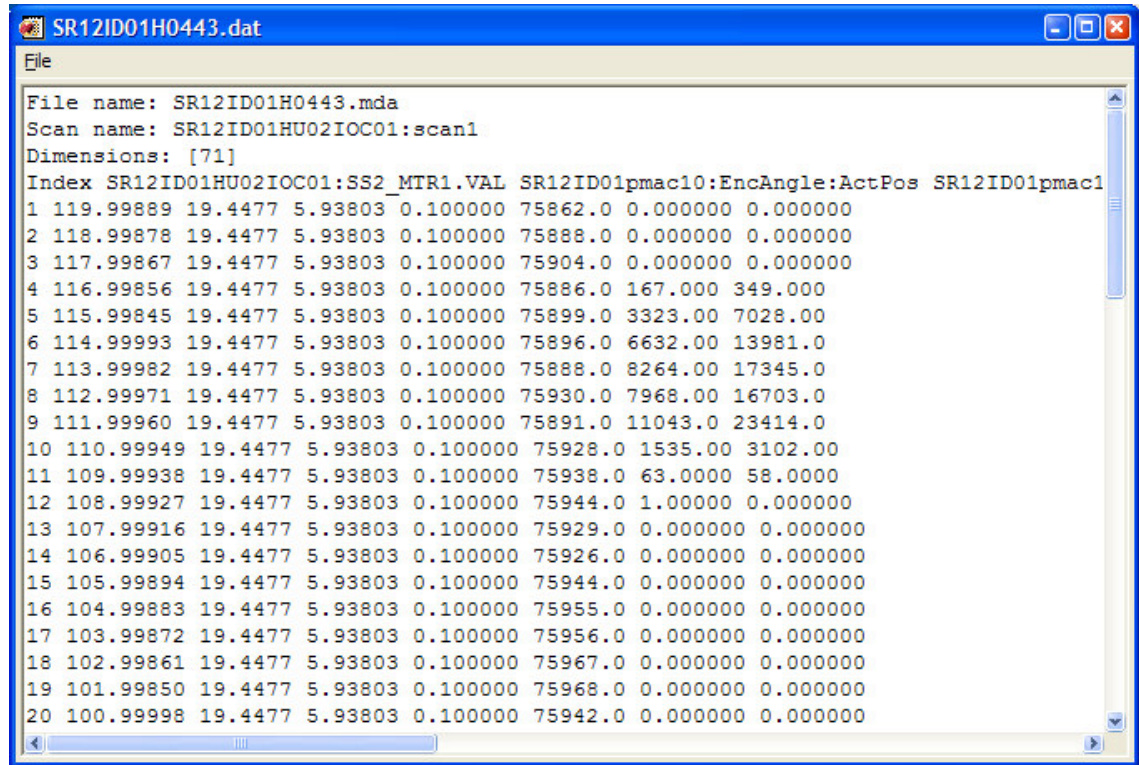
- Double click on ‘MDA Display’ program on the Desktop



- Click on ‘**Read MDA file**’ and open the file to convert. Your files are saved in a folder labelled with the number of your experiment in the path: **XAFS Data on ‘BL data server\user_data\year\run_number**



- Click on 'Display in column format'



```
File
File name: SR12ID01H0443.mda
Scan name: SR12ID01HU02IOC01:scan1
Dimensions: [71]
Index SR12ID01HU02IOC01:SS2_MTR1.VAL SR12ID01pmac10:EncAngle:ActPos SR12ID01pmac1
1 119.99889 19.4477 5.93803 0.100000 75862.0 0.000000 0.000000
2 118.99878 19.4477 5.93803 0.100000 75888.0 0.000000 0.000000
3 117.99867 19.4477 5.93803 0.100000 75904.0 0.000000 0.000000
4 116.99856 19.4477 5.93803 0.100000 75886.0 167.000 349.000
5 115.99845 19.4477 5.93803 0.100000 75899.0 3323.00 7028.00
6 114.99993 19.4477 5.93803 0.100000 75896.0 6632.00 13981.0
7 113.99982 19.4477 5.93803 0.100000 75888.0 8264.00 17345.0
8 112.99971 19.4477 5.93803 0.100000 75930.0 7968.00 16703.0
9 111.99960 19.4477 5.93803 0.100000 75891.0 11043.0 23414.0
10 110.99949 19.4477 5.93803 0.100000 75928.0 1535.00 3102.00
11 109.99938 19.4477 5.93803 0.100000 75938.0 63.0000 58.0000
12 108.99927 19.4477 5.93803 0.100000 75944.0 1.00000 0.000000
13 107.99916 19.4477 5.93803 0.100000 75929.0 0.000000 0.000000
14 106.99905 19.4477 5.93803 0.100000 75926.0 0.000000 0.000000
15 105.99894 19.4477 5.93803 0.100000 75944.0 0.000000 0.000000
16 104.99883 19.4477 5.93803 0.100000 75955.0 0.000000 0.000000
17 103.99872 19.4477 5.93803 0.100000 75956.0 0.000000 0.000000
18 102.99861 19.4477 5.93803 0.100000 75967.0 0.000000 0.000000
19 101.99850 19.4477 5.93803 0.100000 75968.0 0.000000 0.000000
20 100.99998 19.4477 5.93803 0.100000 75942.0 0.000000 0.000000
```

- This will automatically save your data in txt format in the same folder.
- Once your data are converted you can copy them in your USB key.